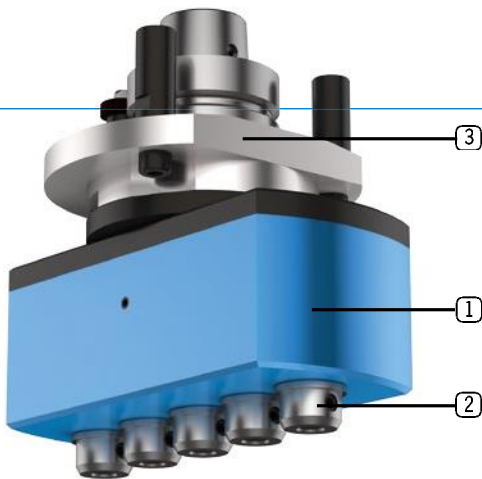


# MULTI-SPINDLE HEAD - CLASSIC LINE

## MULTI V

### ► TECHNICAL DATA



- **Lubrication** Grease
- **Max. drive speed  $n_2$**  12,000 rpm
- **Transmission ratio ( $n_1 : n_2$ )** 1:1
- **Max. drive torque  $M_2$**  5 Nm
- **Weight** about 5.5 kg

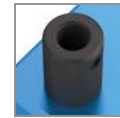
### Standard design

1 No. of spindles/  
spindle distance

5

32

Output spindle



Weldon Ø10

2 Machine  
connection



HSK - F63



Video



► **Multi-spindle head - live in the application**

Scan QR code or go to:

[www.youtube.com/  
BENZWerkzeugsysteme](http://www.youtube.com/BENZWerkzeugsysteme)

### ► Specifications

Machining



Number of  
output spindles



Axis angle



C-angle



Lubrication



MULTI V

► ADDITIONAL OPTIONS: MODULAR DESIGN

①



► NUMBER OF SPINDLES



► SPINDLE DISTANCE



**i** Additional spindle distances/ numbers of spindles/ drilling patterns on request.

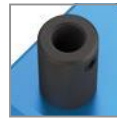
► OUTPUT SPINDLE



Collet chuck  
ER25M



Collet chuck  
ER32



Weldon Ø10

**i** For further information see p. 36

②



► MACHINE CONNECTION



HSK - F63  
BIESSE



SK 30  
BIESSE



HSK - F63  
Busellato



HSK - F63  
Felder



HSK - F63  
HOMAG / WEEKE / WEINMANN



HSK - F63  
IMA



HSK - F63  
Masterwood



HSK - F63  
SCM



HSK - F63  
SCM



HSK - F63  
Weinig

**i** For further information see p. 40